



GermanSolar
The Partner For Your Solar Lifetime®

BIPV SERIES

BIPV AESTHETIC SOLAR PANELS

GermanSolar BIPV Series design brings elegance to your building.

The design can be used in a wide variety of applications, such as facades, rooftops, and balconies. It is also adaptable for commercial buildings and customizable for solar panel layouts, enhancing the aesthetic appeal of your architecture.

FEATURES

Specifications: customized specifications.



**Multilayer
glass**



**Double glass
laminated,
water resistant**



**Aesthetics
pattern**

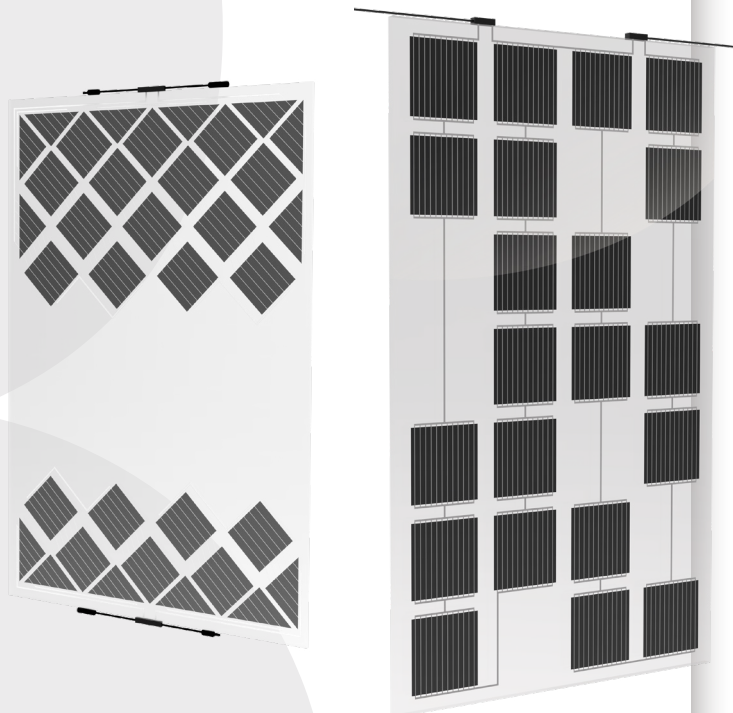


**Customized size
and thickness**

MATERIALS

**4-12 mm tempered glass, high-
transparency 0.76 mm PVB layer**

APPLICATION SCENARIO



APPLICATION SCENARIO

